

Beran Beran Beran
A N K A R A A N K A R A A N K A R A

Beran Beran Beran
A N K A R A A N K A R A A N K A R A

Beran Beran Beran
A N K A R A A N K A R A A N K A R A

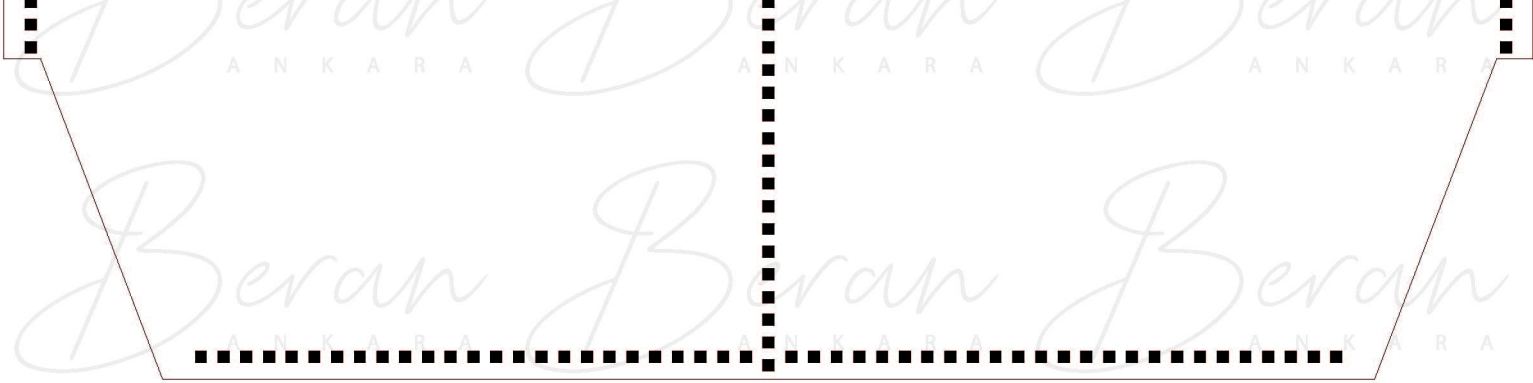
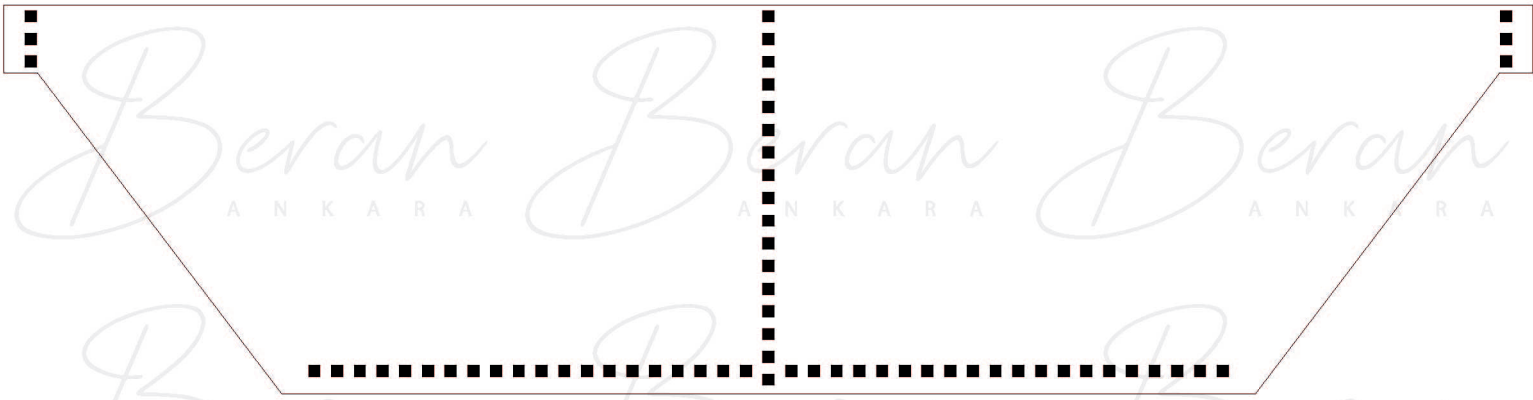
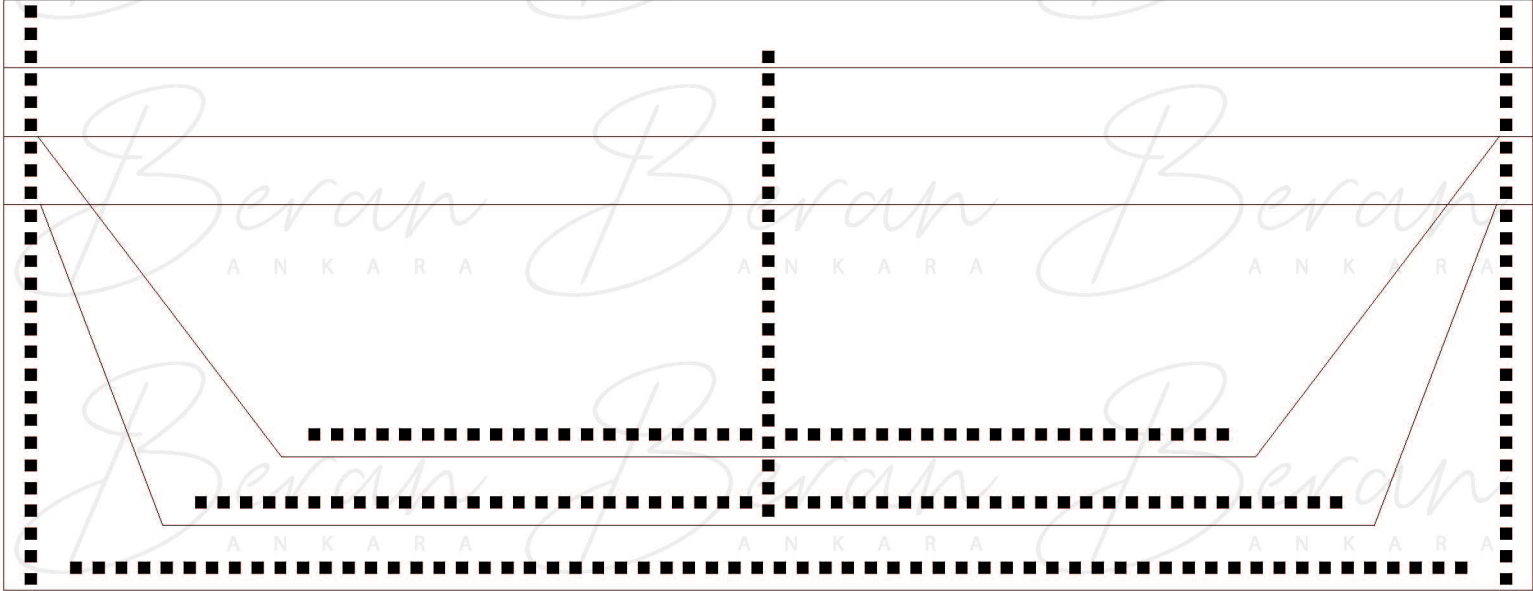
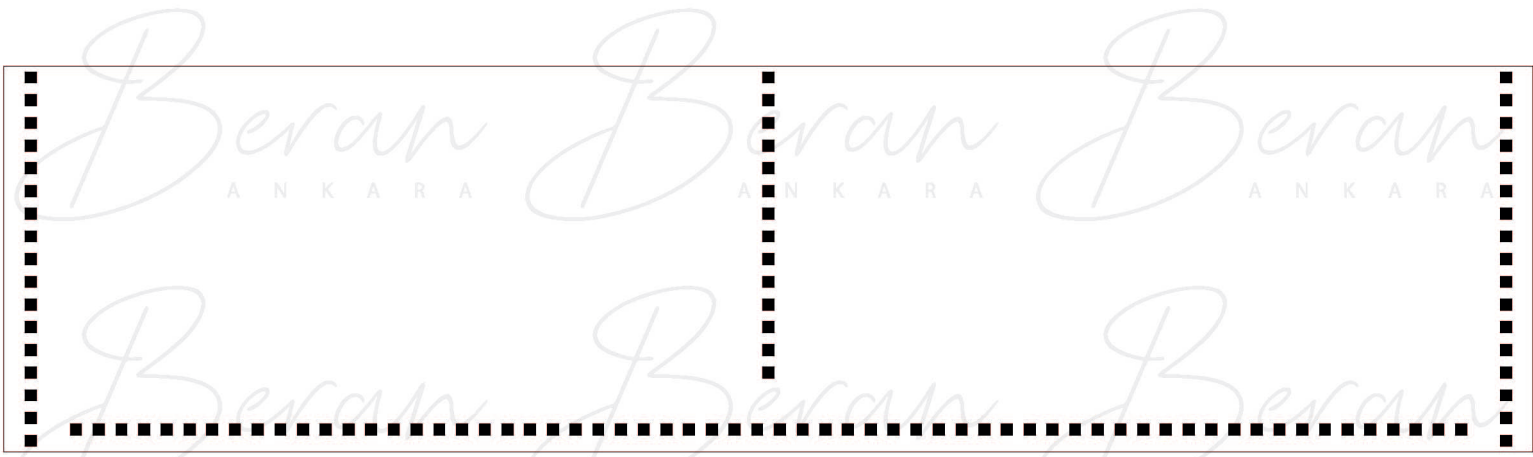
Beran Beran Beran
A N K A R A A N K A R A A N K A R A

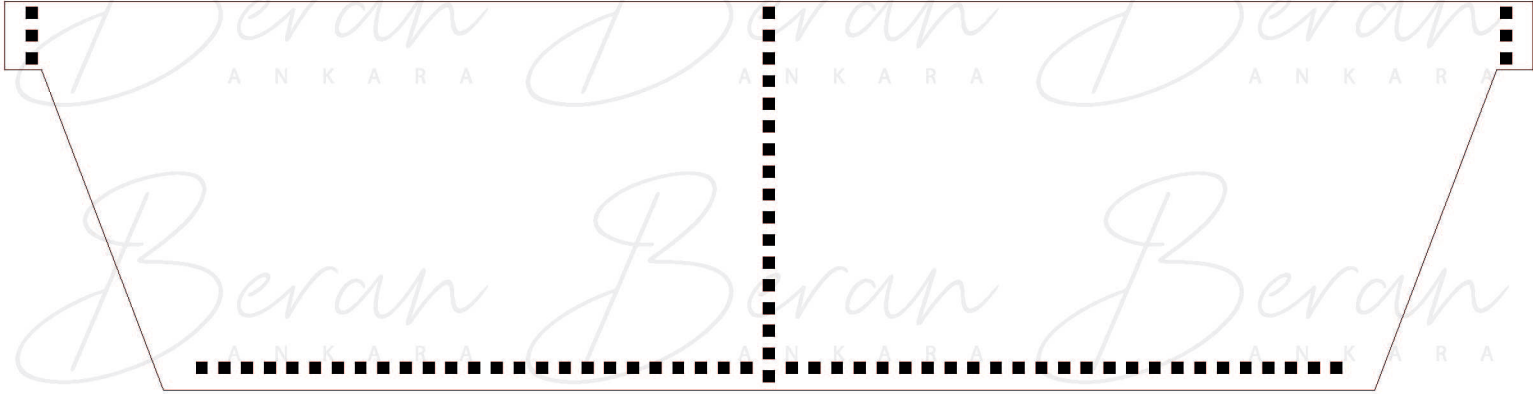
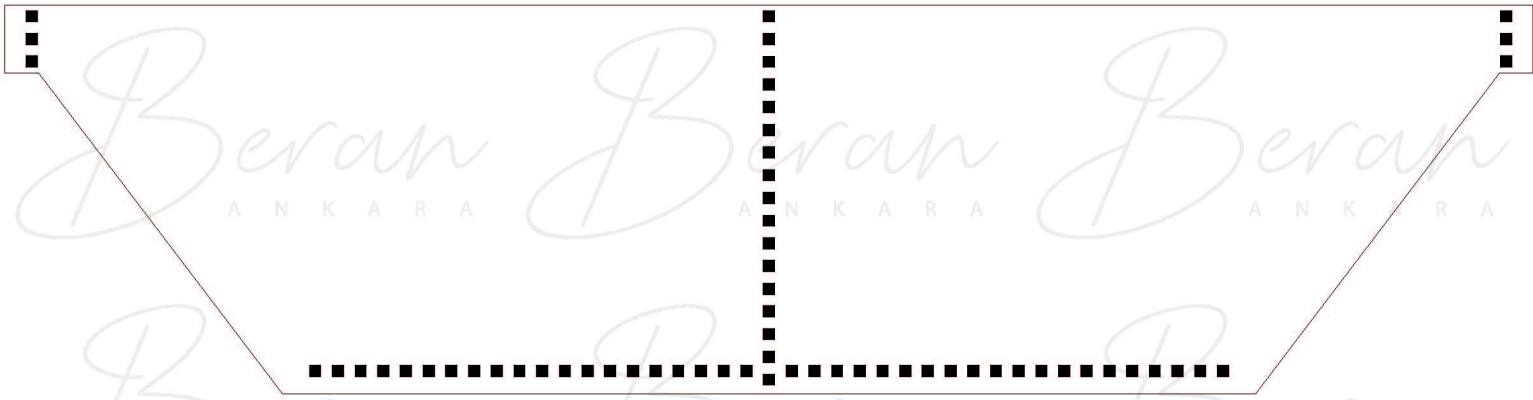
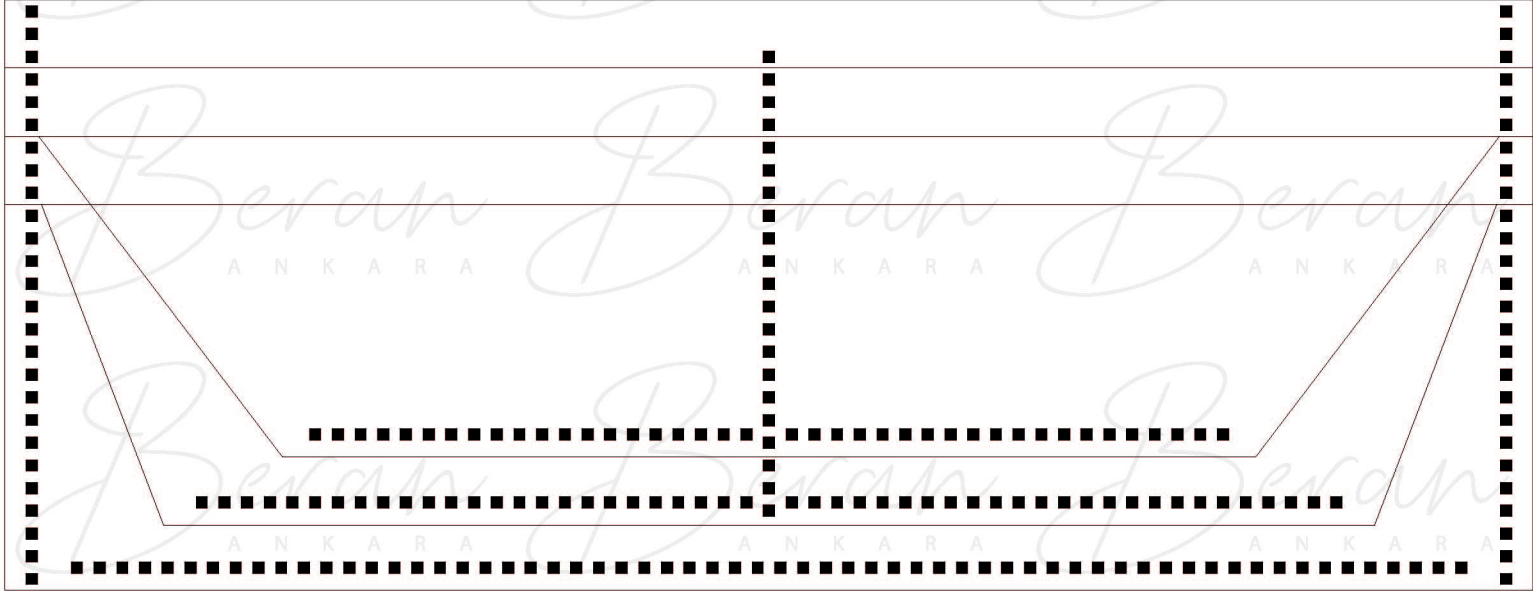
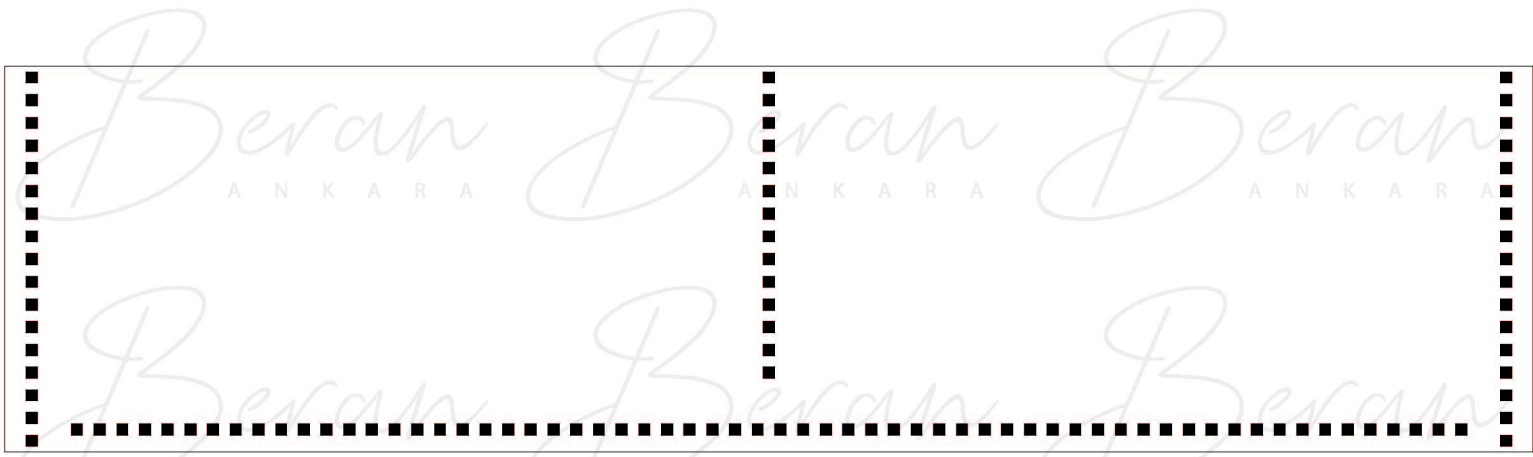
Beran Beran Beran
A N K A R A A N K A R A A N K A R A

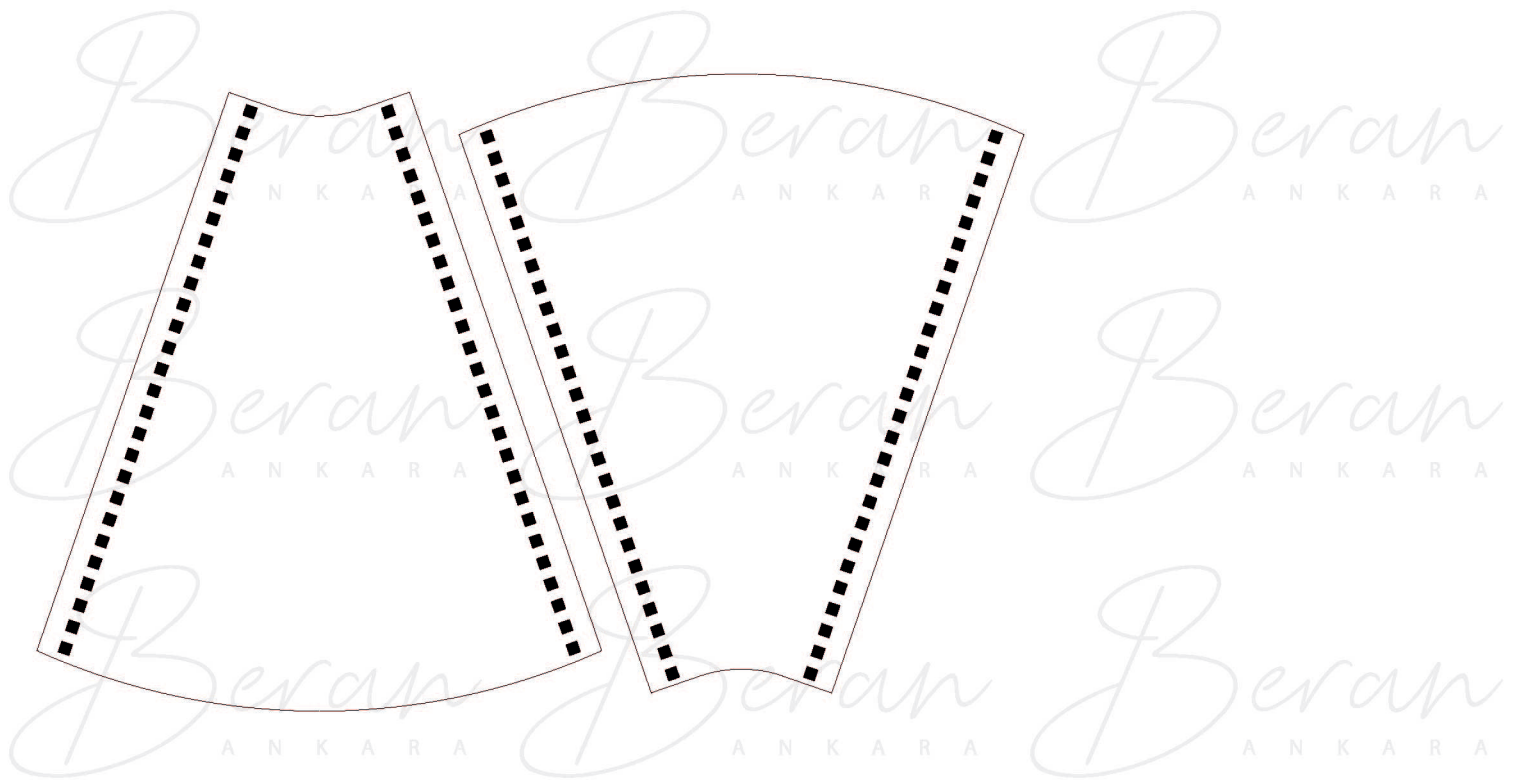
Beran Beran Beran
A N K A R A A N K A R A A N K A R A

Beran Beran Beran
A N K A R A A N K A R A A N K A R A

Beran Beran Beran
A N K A R A A N K A R A A N K A R A







No: 01 Clutch

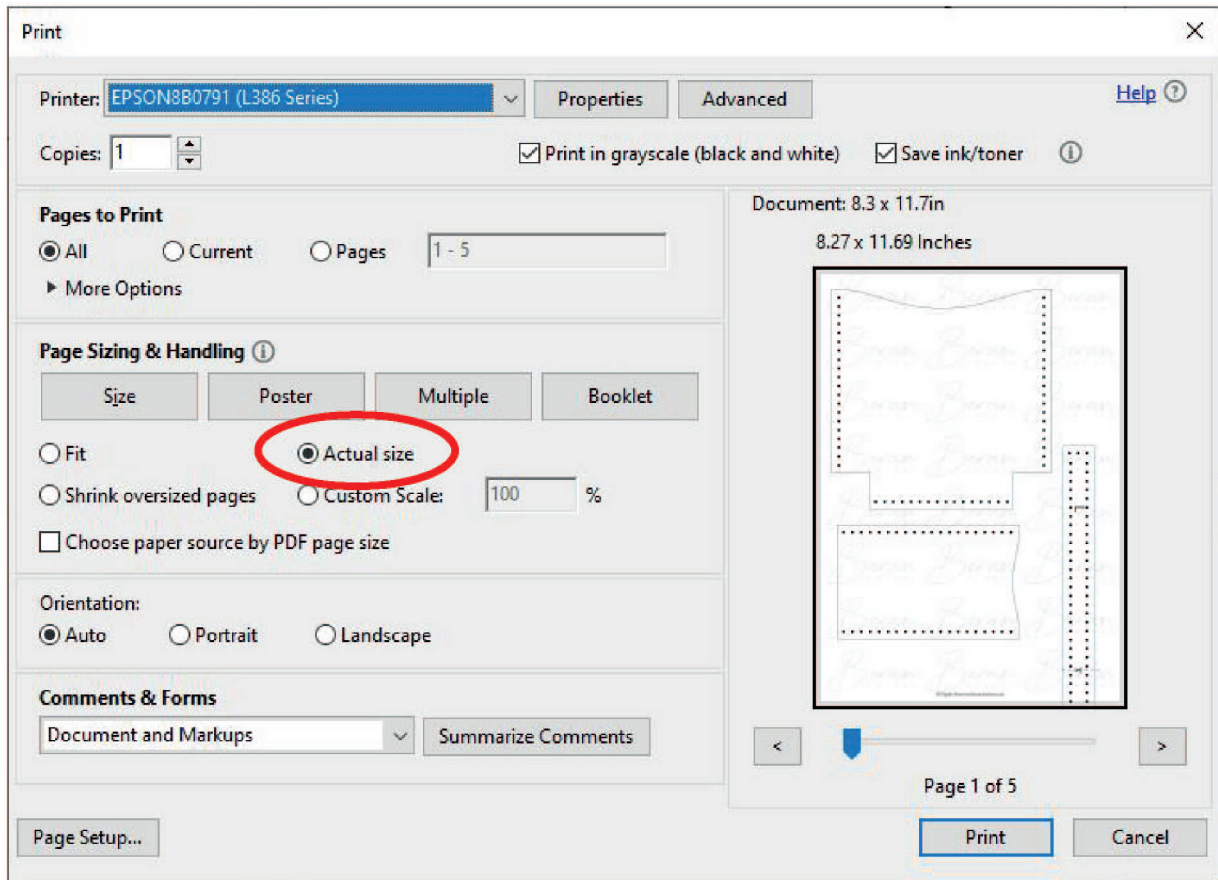


What you need:

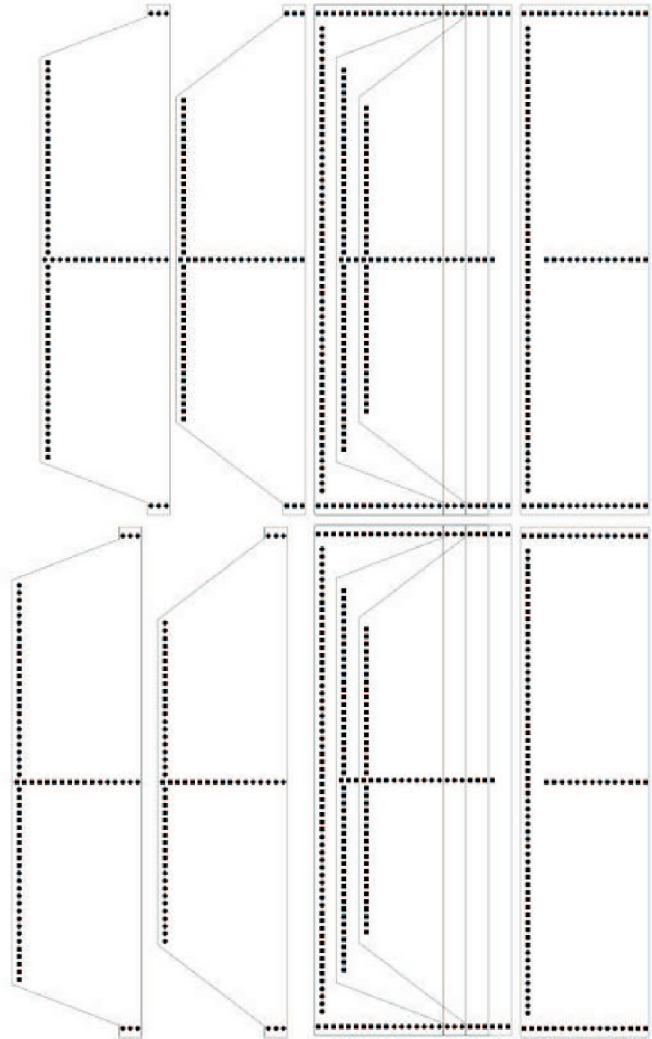
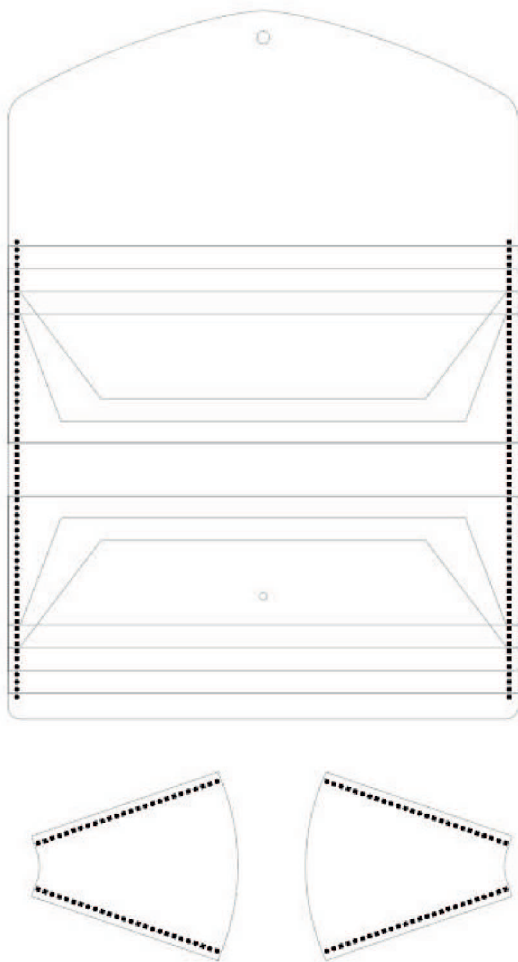
- 2.0-2.2mm leather (Cover)
- 1mm leather (Pockets)
- Brass snap with 10mm cap diameter.
- 3mm french pricking iron (if you don't have one use your awl)
- 1mm Edge creaser (Optional)
- Tokonole (If you can't afford one use water or some of your own DNA)
- Edge burnisher (If you don't have one you may use the epidermis side of some veg-tan leather.)
- Steady hands and patience.

Enjoy!!

No: 01 Clutch

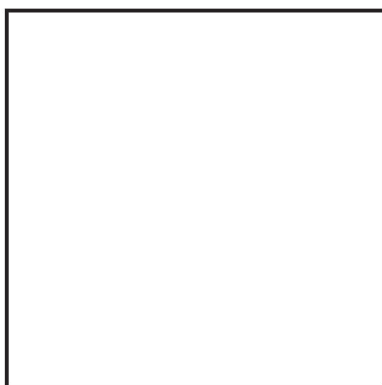


Make sure to select A4 media and Actual size options.



TEST YOUR MEASUREMENTS BEFORE STARTING THE PROJECT

2 CM



2 CM

2 inches



2 inches